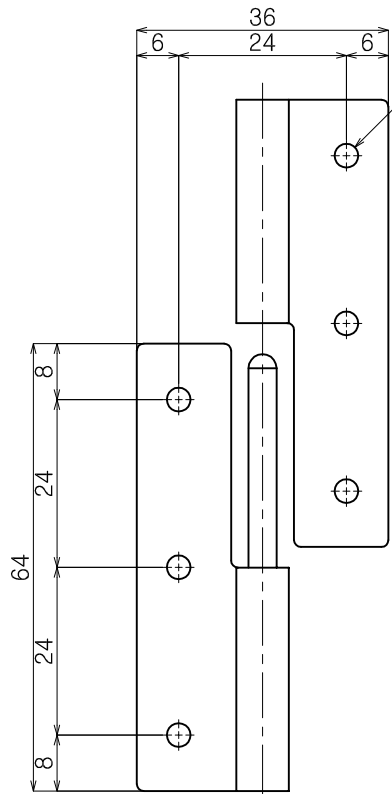
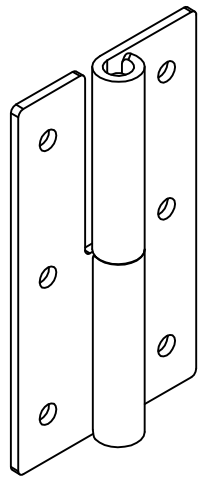
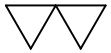
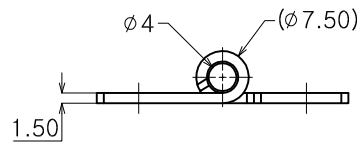
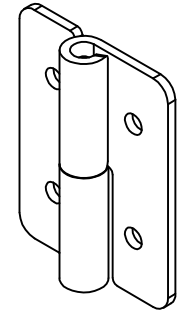
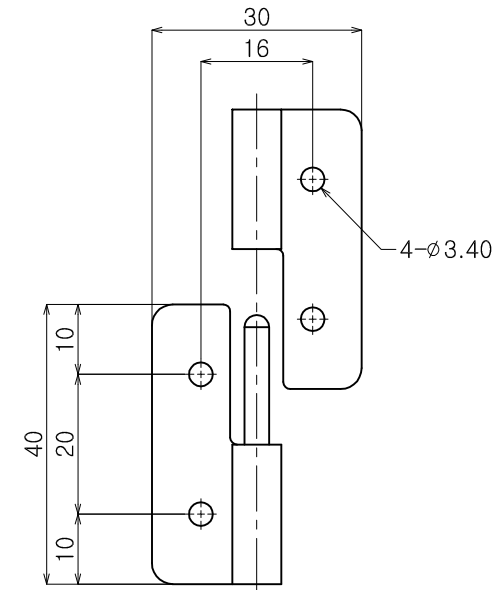
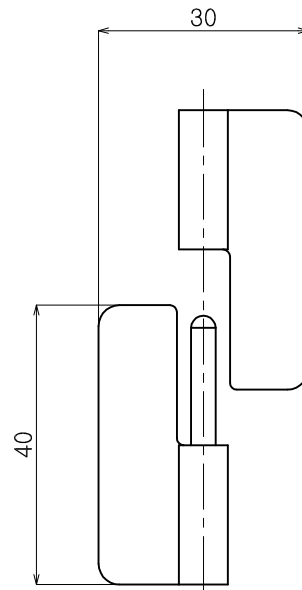


Dwg. No.

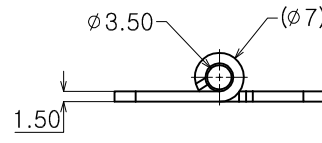
Re. No.	DESCRIPTION	DATE	DS.	CH.	AP.
△					
△					
△					



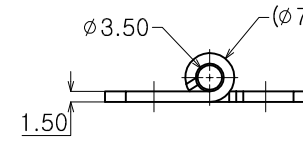
3L & 3R=6- ϕ 3.4
3LS & 3RS=6- ϕ 4.2



※ CH- 046-3R /CH-046-3RS



※ CH- 046-2R



※ CH- 046-1R

Note

- 특징 :
- 용도 :

제품명	인출방향	표면처리
CH- 046-1L	좌	광택연마
CH- 046-1R	우	
CH- 046-2L	좌	
CH- 046-2R	우	
CH- 046-3L	좌	
CH- 046-3R	우	바렐연마
CH- 046-3LS	좌	
CH- 046-3RS	우	

Dimension (mm)	Precision	Material	Dwg. No.	QTY	
0.5~3	±0.05	STS 304	Part Name.	**	
3~6		Finish		**	Weight
6~30	±0.1	광택연마/바렐연마	Ass'y Name	-	
30~120	±0.15	Revision	**	Scale	
120~315	±0.2	-	A3	1.4:1	
315~1000	±0.3	Date	Designed by	Model No.	
1000~2000	±0.5	2011-11-15	Shin S H		CH- 046
		Checked by	Approved by		
KS B 0412에 준함					